

DEAN R. WAGNER CO., L.P.A.
Attorneys at Law

One Cascade Plaza, Suite 1000, Akron, OH 44308
Telephone (330) 535-1555 • Fax (330) 535-9113

DIRECTIONS:

From Cleveland:

I-77 South to Route 59 East
Take exit 21C toward downtown
Take the exit toward Downtown/Cascade Parking/Market Street.
You will go through two traffic lights
Move to the right lane and stay there
Turn right on West Mill Street
Turn right at the first light into the Cascade Parking Garage
**Directions through the parking garage are attached*

From Youngstown, Kent and other points east:

I-76 West to Exit 22A – Main Street/Downtown exit
Continue north on Broadway (one-way street).
Turn left on Mill Street
Cross over Main Street
Turn left at the light in to the Cascade Parking Garage
**Directions through the parking garage are attached*

From Canton:

I-77 North toward Akron
Merge on to I-76 West/I-77 North at exit 125B toward Cleveland
Take Exit 22A – Main Street/Downtown exit
Continue north on Broadway (one-way street).
Turn left on Mill Street
Cross over Main Street
Turn left at the light in to the Cascade Parking Garage
**Directions through the parking garage are attached*

From Stow/Cuyahoga Falls:

Route 8 South to Exit 1B - Perkins Street exit.
Turn right onto Perkins Street
Turn left on to Main Street
Turn right on to Mill Street
Turn left at the light in to the Cascade Parking Garage
**Directions through the parking garage are attached*

The next page includes directions through the parking garage to our floor

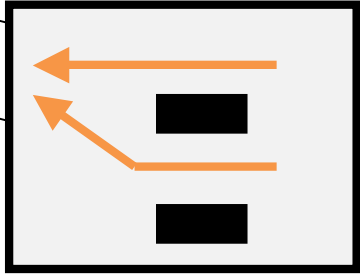
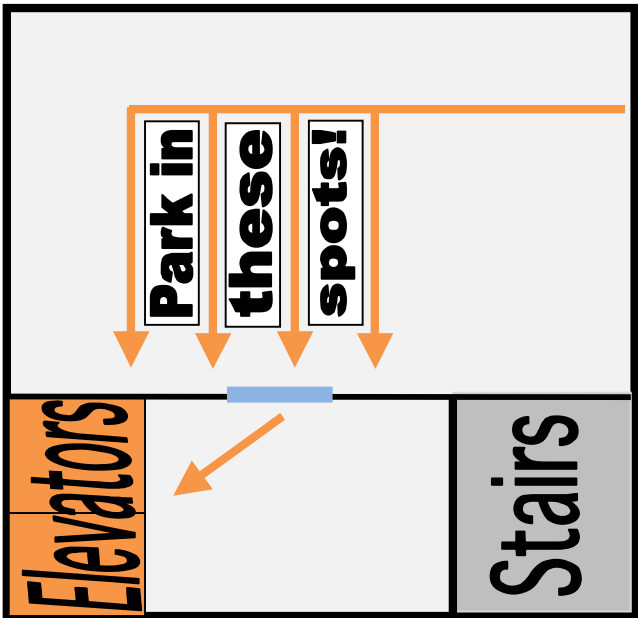
The address of the Cascade Parking garage is: 10 West Mill Street, Akron, Ohio 44308



Cascade Deck
10 West Mill Street
Akron, Ohio 44308

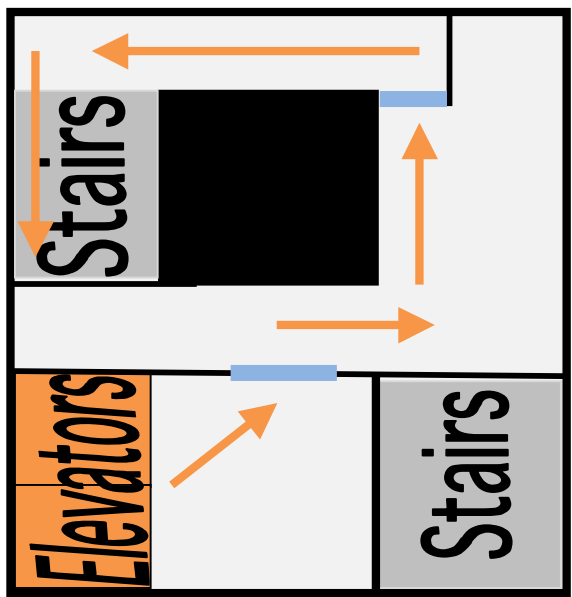
The PNC Building is the tall dark skyscraper on the corner of Main Street and Bowery Street

Parking Garage Floor



Entrance
on Mill Street

First Floor



- DIRECTIONS FOR THE PARKING GARAGE**
- Enter the parking garage on Mill Street
 - Take a ticket and drive straight up the ramp
 - Park in the area designated by the orange arrows and hanging visitor signs
 - Go through the glass doors and go up the elevator to the first floor
 - On the first floor, follow the glass doors back into the parking garage (not outside)
 - Turn right, then left following the “to 1 Cascade” signs through the glass door
 - Turn the corner and go up the stairs/escalator
 - After you get off the stairs, walk around the right corner and take the elevators up to the 10th floor